

# Golasso Basketball Shot Clock and All Purpose Timer

## Golasso Basketball Shot Clock and All Purpose Timer

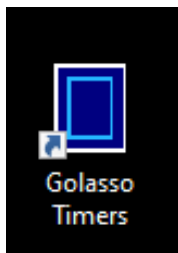
This Windows® software turns your PC monitor into a fully functioning timer which displays tenths of seconds. There are two modes of operation. In the Basketball Shot Clock Mode, specify the number of seconds to shoot after a change of possession and the number of seconds to shoot after an offensive rebound. In the General Timer Mode, specify the number of minutes/seconds to count down. If zero is entered for the number of minutes/seconds, the General Timer moves forward as a stopwatch. When the clock counts down, a buzzer sounds at 0.0. The buzzer sound is linked to your PC or laptop speakers, so make sure speakers are not muted. **No internet connection is required and the software is free of ads.**

## How to Order

There is a one-time license fee of \$19.95 for perpetual use of the software. Free delivery. Request a PayPal invoice by email to [service@thegolassocompany.com](mailto:service@thegolassocompany.com) PayPal accepts all major credit cards. After your payment is approved by PayPal, you will receive an email with a download link to an executable containing an Install Wizard to guide you through installation. You can run the Install Wizard immediately or you can save the executable on your PC or on a flash drive and then install the software at any time by clicking the Installation Setup Icon.

## The Control Panel

A blue Golasso icon will appear on the desktop after software is installed. Click on it to open the Control Panel and select the display options.



Golasso Software Copyright 2022

BEFORE OPENING THE DISPLAY	AFTER OPENING THE DISPLAY									
<b>TIMER MODE: BASKETBALL SHOT CLOCK</b> <input type="checkbox"/> CHECK BOX TO SWITCH TO GENERAL USE MODE	Operate using keyboard or click <b>BUTTON</b>									
1. SELECT NUMBER STYLE: <input type="checkbox"/> DOT MATRIX <input checked="" type="checkbox"/> 7-SEGMENT LED <input type="checkbox"/> LIGHT BOX	<b>TIME CLOCK</b> <b>CLOCK</b> Start Clock: Press ENTER Key. Stop Clock: Press ENTER Key.									
2. SELECT SIZE: <input type="checkbox"/> 1 <input type="checkbox"/> 2 <input type="checkbox"/> 3 <input checked="" type="checkbox"/> 4 <input type="checkbox"/> 5 <input type="checkbox"/> 6 <input type="checkbox"/> 7	<b>SETTING THE TIME</b> <b>&lt;</b> <b>&gt;</b> Add Time: Shift+RIGHT ARROW Key Subtract: Shift+LEFT ARROW Key Press UP ARROW Key to reset clock. <b>RESET</b> Rebound Reset: DOWN ARROW <b>SET-R</b>									
3. ENTER RESET TIME (SECONDS TO SHOOT)... <b>24</b> OFFENSIVE REBOUND RESET TIME... <b>14</b> >IF REBOUND RULE IS NOT USED ENTER ZERO	<b>SOUND THE BUZZER:</b> Press F3 Key <b>CLOSE DISPLAY:</b> Press END or ESC Key <b>END</b>									
4. ENTER TITLE: <b>EDISON HIGH</b>	<b>SEND DISPLAY TO LARGE SCREEN TV</b> Use HDMI cable to attach your laptop to TV. After opening display on laptop, send it to the TV by pressing at the same time 3 Keys: Windows Key, Shift Key, and Left Arrow Key. SUPPORT: service@thegolassocompany.com									
5. FOR EACH SECTION OF THE DISPLAY SELECT THE COLOR OF THE TEXT AND THE BACKGROUND COLOR <table border="1"><thead><tr><th>SECTION</th><th>TEXT COLOR</th><th>BACKGROUND</th></tr></thead><tbody><tr><td>TITLE</td><td><b>Yellow</b></td><td><b>Red</b></td></tr><tr><td>CLOCK</td><td><b>Yellow</b></td><td><b>Black</b></td></tr></tbody></table>	SECTION	TEXT COLOR	BACKGROUND	TITLE	<b>Yellow</b>	<b>Red</b>	CLOCK	<b>Yellow</b>	<b>Black</b>	
SECTION	TEXT COLOR	BACKGROUND								
TITLE	<b>Yellow</b>	<b>Red</b>								
CLOCK	<b>Yellow</b>	<b>Black</b>								
6. SELECT DISPLAY: <input checked="" type="checkbox"/> FULL SCREEN <input type="checkbox"/> WINDOW										
7. SELECT BUTTON SIZE: <input type="checkbox"/> SMALL <input checked="" type="checkbox"/> LARGE <input type="checkbox"/> CHECK TO HIDE BUTTONS ON DISPLAY										
<b>CLICK TO OPEN</b>										

## Size of Number Display

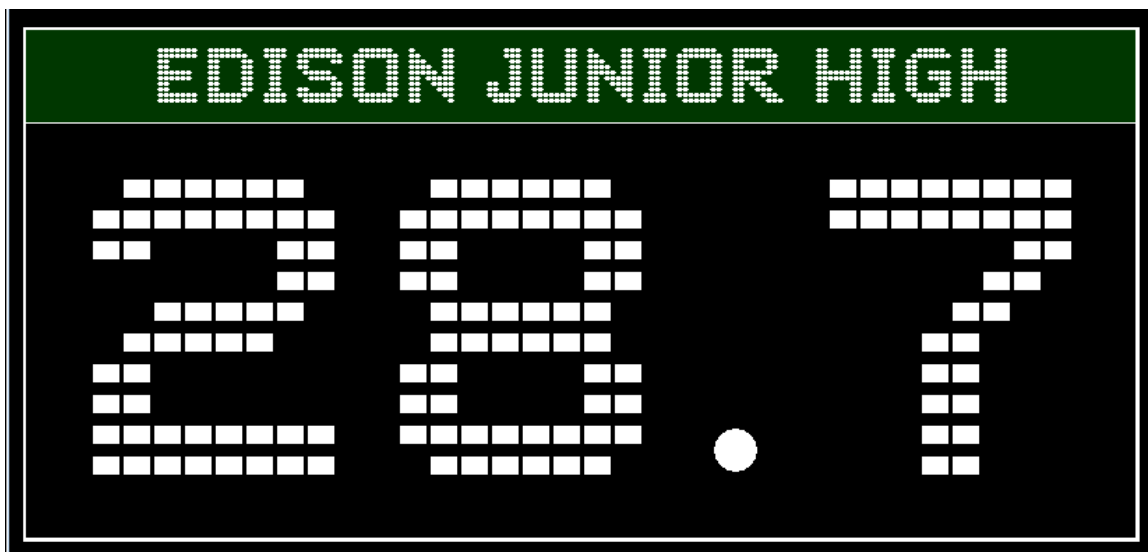
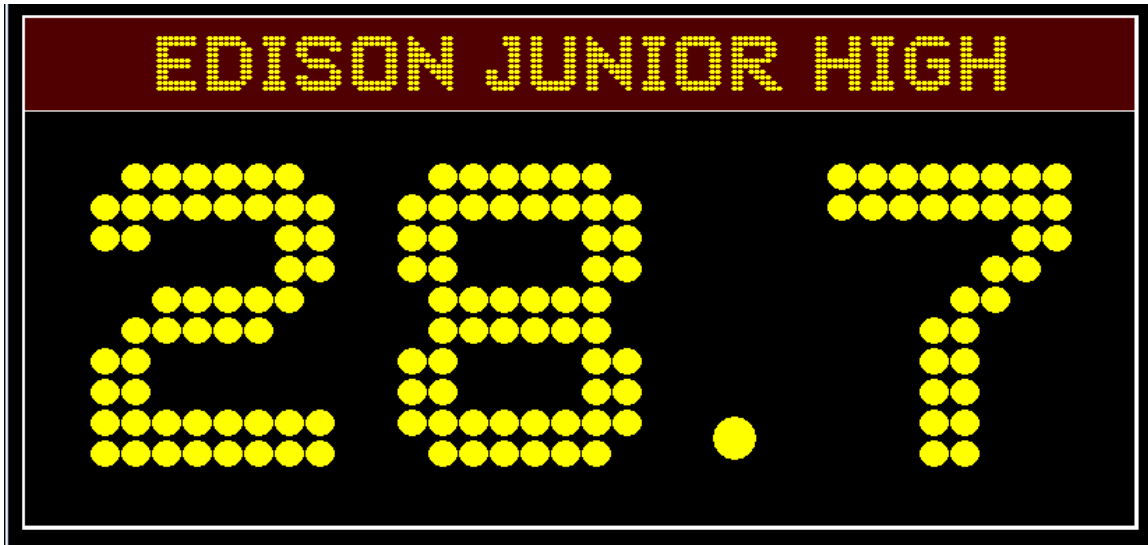
Select from seven display size options. Designed for long-range visibility on a standard PC monitor or large-screen television, the numbers can be set as big as six inches high and two inches wide. Connect your laptop to a large screen TV with HDMI cable.

## Color Scheme Options

The color of the numbers and background color can be specified to your preference. Numbers can be displayed in white, yellow, red or neon green. Background color can be black, blue, grey, green or red.

## Style of Number Display

The software can simulate three styles of numbers found on classic scoreboard timers. Select from Dot Matrix, 7-Segment LED or Light Box. Examples of each style are shown on the next page.



# Golasso Basketball Shot Clock and All Purpose Timer

---

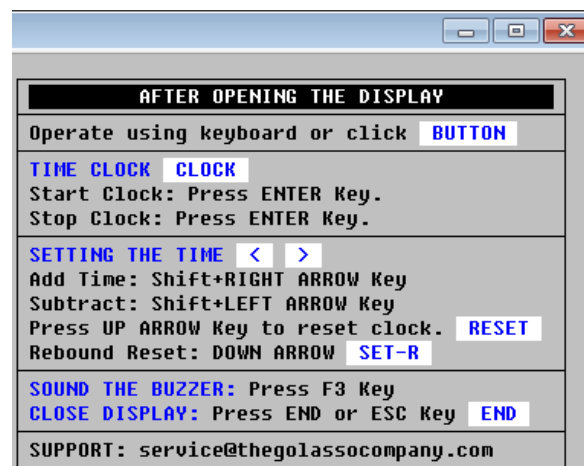
## Optional Header

If desired, enter a header such as school name or the event being timed.



## Controlling the Shot Clock or Timer

The clock can be controlled via your keyboard or by clicking buttons which appear below the display. If you use buttons, they can be clicked with your mouse, a laser clicker or by touch on monitors with touch screens. If you control via the keyboard, the buttons can be hidden from the screen.



# Golasso Basketball Shot Clock and All Purpose Timer

---

The buttons which appear below the display are shown below.



## Software Specifications

The software operates exclusively on all Windows® Operating Systems. It requires only 2 MB space on your hard drive.